

EASYCATALOG

FOR ADOBE® INDESIGN®



RELEASE NOTES



About This Document

These Release Notes detail the changes made to EasyCatalog since the previous version and may include details of new functionality that is not yet included in the main EasyCatalog User Guide.

Maintenance releases of EasyCatalog will also include a number of bug fixes, so it is a good idea to check that you're always running the latest version of EasyCatalog

using the 'Check for Updates' button on the 'About EasyCatalog' dialog.

Release Notes for previous versions can be found here: [http://www.65bit.com/downloads/easycatalog/files/CS3/Previous Release Notes.pdf](http://www.65bit.com/downloads/easycatalog/files/CS3/Previous%20Release%20Notes.pdf)

Upgrading from Previous Versions

Installing This Update

The latest version of EasyCatalog can be installed using the installer that can be downloaded from our web site:

<http://www.65bit.com/downloads/downloadpre.shtm>

Workspace Folders

The format of the EasyCatalog workspace folder has not changed since version 2.1.x of EasyCatalog. Therefore,

any data sources created since version 2.1 of EasyCatalog will also open in EasyCatalog versions 3, 4 and 5.

Workspace folders created in EasyCatalog for InDesign CS1 will not open in the CS3, CS4 and CS5 versions of EasyCatalog and must be re-created. Provided the data source name, key fields and field names remain the same any existing documents should remain linked to the new data source.



AS WITH ANY SOFTWARE UPGRADE, ALWAYS BACKUP YOUR EASYCATALOG WORKSPACE FOLDER AND DOCUMENTS PRIOR TO INSTALLING THE LATEST VERSION.

Version 4.0.5 / 5.0.3

8 March, 2011

Enhancements

EasyCatalog

- A new option is available on the right-click contextual menu: 'Clear Update Flags'. This new option will remove the 'updated' status from the selected record(s). [469]
- 512 fields can now be displayed on the Field Specifiers, Field Options and Show/Hide Fields menus. [470]
- A new keyboard shortcut has been added - 'Replace Fields In Selection' which will show the EasyCatalog 'Replace' dialog but only replace the fields in the document selection. [498]
- Added support for the <SMALL> HTML tag. [503]
- Added new contextual menu option to allow field content to be edited within EasyCatalog. Right-click on the field to edit and select 'Edit Field Content' [512]
- When using the 'Adopt Fields' menu option, any records that are present in the document but not in the data source being adopted to can now be added to the panel. Any records added to the panel will be shown as 'deleted'. [516]

- Fields that have been updated in the data source are now shown with a yellow dotted outline when the background colour of the field is red. [536]
- The EasyCatalog workspace folder can now be organized into sub-folders. These sub folders are now displayed in the 'File → New → EasyCatalog Panel' menu. [538]
- If the structure of a data source changes, EasyCatalog will now show the differences between the old and the new. Previous versions would load a fresh copy of the data and not highlight the changes. [540]
- Added mouse scroll wheel support for the Record Viewer Panel and the Group dialog. [542]
- User-interface elements of EasyCatalog can now be suppressed (disabled) or hidden using a 'SuppressedUI.xml' file in the root of the EasyCatalog workspace folder.

```
<?xml version="1.0" encoding="UTF-16" standalone="yes"?>
<SuppressedUI>
<SuppressedAction actionID="576521" restrictionType="hide"/>
<SuppressedAction actionID="576565" restrictionType="hide"/>
</SuppressedUI>
```

[xxx]

Record Viewer Panel

[531]

- Added support for literal (exact match) searching in the Record Viewer panel. Entering the search term in single quotes will only show records where the entire field content matches the search term entered. [499]
- Searches are now case insensitive in the Record Viewer panel, unless a literal search is being performed. [500]
- When searching in the Record Viewer panel, the highlighted search result is now horizontally scrolled into view. [501]
- Added 'Key Fields' search option to the Record Viewer panel to allow the user to search the content of only the key fields. [504]

Custom Field Functions

- Support has been added for the EanT48L barcode font. The EAN13/EAN8 custom field functions have been modified to accept an optional second parameter which specifies the glyphs to use:

```
EAN13(FIELDSTR(code), GETBARCODEGLYPHS('EanT48L'))
```

[483]

- Added 'COUNTOF' custom field function which returns the number of instances of one string in another.

```
COUNTOF('Apple', 'p')
```

[484]

- When using regular expressions, the contents of back references can now be converted to lower case by prefixing the back reference with \L:

```
REGEX:(.+?<small>)(.+?)(</small>)=\1\L\2\3;
```

[488]

- Added 'INDEXOF' custom field function which returns the character index of one field within another.

```
INDEXOF(FIELDSTR('Manufacturer'), 'Apple')
```

[492]

- Added 'LENGTH' custom field function which returns the length of the given string.

```
LENGTH(FIELDSTR('Body Copy'))
```

[493]

- Added 'LASTINDEXOF' custom field function which returns the character index of the last instance of one string within another.

```
LASTINDEXOF(FIELDSTR('Body Copy'), 'Apple')
```

[494]

- Added support for InDesign metacharacters in custom field function parameters.

```
INDEXOF(FIELDSTR('Manufacturer'), '^p')
```

[495]

- Added 'XREFFIELD' custom field function which searches returns the contents of another record's fields.

```
XREFFIELD('PartNbr',FIELDSTR('XrefPartNbr'),'PageNbr')
```

- Added 'GROUPXREFFIELD' custom field function which searches returns the contents of another record's fields within the same group as the record.

```
GROUPXREFFIELD('Parent Group:Child Group', 'PartNbr',FIELDSTR('XrefPartNbr'),'PageNbr')
```

[546]

- Added 'GROUPNUMBERSEQUENCE' custom field function which creates a comma separated list of numbers in the specified field in ascending order. Contiguous ranges are shown as nnn-yyy.

```
GROUPNUMBERSEQUENCE('Parent Group:Child Group','TOC_PageNumber')
```

[555]

- Added 'GETNTHPOPULATEDPARAM' custom field function which returns the n'th populated parameter.

```
GETNTHPOPULATEDPARAM(0,FIELDSTR('Small_Price'),FIELDSTR('Medium_Price'),FIELDSTR('Large_Price'))
```

[565]

EasyCatalog Pagination Module

- Specifying a 'Position Index' of 'ALL' will copy and repeat the contents of a text box once per record in the group being paginated. [548]

- Added new Frame Fitting option - 'Frame Content Depth and Width' which will adjust the width and height of the frame to fit the content (in the same manner as double clicking the bottom-right control point of the text frame). [560]

- Added new Pagination Rule - 'Fitting Anchor Point' - which specifies the anchor point to use when frame fitting. For example, specifying an anchor point of 'bottom center' will resize the top of the box down until the text fits. [570]

- A new pagination option is available (which can currently only be set via a scripting call or by manipulating 'Pagination.xml' in the EasyCatalog workspace folder) which forces 'Position Based' pagination to paginate the product styles in the position specified (rather than populating the product style and then moving it to the specified co-ordinates). [572]

- Columns can now be excluded from the 'Restrict Vertical Cell Merging to Page Bounds' function by highlighting the table column and specifying the following in the 'Script Label' dialog:

```
keepmergedcellstogether
```

[547]

- Right/CTRL click support added to Pagination Rules panel to set pagination options.
- Scroll-wheel support added to Pagination Rules panel.

EasyCatalog Scripting Module

Added new 'Remove Field Markers' scripting call.

```
var myEasyCatalog = app.easycatalogObject;
var myDoc = app.activeDocument;
myEasyCatalog.removeFieldMarkers(myDoc);
```

[312]

- An optional parameter has been added to the *LoadFile* call to specify the encoding type.

```
var myDS = myEC .loadFile("my data source",
    "Macintosh HD:utf8file.csv", ",", "LF", "key",
    "UTF8");
```

[513]

- Added an optional parameter to the '*paginateUsingDefaults*' call to specify the document to use. [568]
- Added new scripting call to specify field options. The parameters are: field name, option name, option value. The option name is the same as specified in the 'Fields.xml' file.

```
myDS.setFieldOption("Make", "prefix", "xxxx");
```

[514]

Bug Fixes

EasyCatalog

- Regular expression back references would sometimes insert the wrong characters. [472]
- Crash when using group custom field commands with a field that does not exist. [474]
- Picture import would always add the file extension even if it was already present in the field content. [475]
- Field definition files from the CS1 version would not import on Intel Macintoshes. [478]
- Empty image fields not importing the replacement image. [482]
- Placed status not updating correctly when dragging a populated library item or snippet to the document. [489]
- Custom fields that do not have a function specified are not being formatted (prefix, suffix, etc). [490]
- Custom fields that do not have a function specified cannot be used as a parameter to other custom fields. [491]
- Empty strings should evaluate to '0'. [496]
- Carriage returns, new lines and tabs should be replaced by spaces when displaying field content in the record viewer panel. [502]
- Insertion of Field Specifier is losing character styles applied to the text. This only occurs when text is selected in the document whilst inserting a field specifier. [505]
- *Update Furniture* using the first item on the page will sometimes use the last item from the previous page. [506]
- 'Occurred' is spelled incorrectly in the product registration error messages. [509]
- "Exclude from Document Updates" and "Exclude from Data Source Updates" renamed to "Exclude from Update Document" and "Exclude from Update Panel". [510]
- Unable to create a new data source if a data source of the same name is displayed in the *Record Viewer* panel. [515]
- Column header icons are displayed in the wrong position. [517]
- Insertion of a field is losing the character styles applied to the text. This only occurs when text is selected in the document prior to inserting the field. [518]
- '*Update Document*' is dirtying the document when no fields have been updated. [519]
- File → New → EasyCatalog Library dialog is defaulting to a location inside of the InDesign application package (Macintosh only). [520]
- Fields for records marked as deleted should be shown as 'in error'. Records marked as deleted that contain placed fields should also appear in advanced query results for 'error' records. [521]
- Corrupted path after using folder chooser on Windows 7. [528]
- Crash when opening some data sources in CS5. [529]
- Unable to activate the plug-ins if the trial has not expired. [530]
- Character styles located in style groups cannot be used in *Formatting Tags*. [532]
- The colour attribute in the tag does not recognise colours with spaces in their names when applying formatted text. [541]
- Fields in table headers and footers are being shown as 'in error' if they are in a header or footer that is not displayed due to the 'skip first'/'skip last' row attribute. [549]
- When populating a Product Style, any Field Specifiers/Fields that are in hidden conditional text will not be populated. [550]
- Recomposition issue after '*Restrict Vertical Merging to Page Bounds*'. [551]
- Cleansing behaves differently on Mac and Windows machines. Windows version will sometimes ignore the ^ regular expression character. [552]
- *Update Page Numbers* from book panel is recreating custom fields after every document - it should be done once at the end. [553]
- Improved error reporting when downloading an image from a URL. [556]
- Image URLs containing a colon generate an error when downloading (Macintosh only). [557]

- Images containing a trademark character will sometimes fail to import images (Macintosh only). [563]
- Custom field command parser attempts to interpret string literals which are outside of custom field function parameters. [564]
- Single quotes inside of string literals for custom field function parameters are not being un-escaped. [566]
- Crash when producing a matrix table from Relational data. [569]
- Overset text is not always appearing in red in the panel. [571]
- MIN function not working. [574]

EasyCatalog Pagination Module

- Pagination crashes if all boxes have been deleted from the Product Style by actions. [479]
- 'Prevent Break' inserts a break character even when the Product Style has been inserted as the first item on the page, resulting in an unnecessary blank page. [480]
- 'Use Next Position if Item Doesn't Fit' not working when 'Collision Detection' is turned off. [481]
- If an invalid 'Position Index' is encountered during pagination, InDesign will crash. [487]
- The 'Show/Hide' action doesn't work with text boxes. [522]
- The 'Ungroup' Pagination Rule will sometimes cause pagination to stop with the error 'One or more objects would move off the pasteboard'. [524]
- The 'Ungroup' Pagination Rule is not always processing all of the groups (e.g. when a group contains sub groups). [525]
- A 'field not found' error may occur when evaluating a Pagination Rules Action when using a Relational Data Source. [527]
- 'Update Furniture' should ignore the contents of table header and footer rows. [544]
- 'Update Furniture' not always sorting the first and last items on the page correctly. [554]
- 'Update Furniture' sometimes uses the last item on the previous page instead of the first item on the page. [559]
- Fit box to text sometimes leaves the box overset. [562]
- Position-based pagination will sometimes add blank pages to the document when inserting new pages. [577]
- Position-based pagination should use section page numbers. [576]
- Progress bar on master-based pagination sometimes shows too many steps when the panel is grouped. [575]

EasyCatalog Relational Module

- 'Unable to access resource' error when displaying the Relational configuration dialog for the first time. [561]

Version 4.0.5 / 5.0.3

25 August, 2010

Enhancements

EasyCatalog

- Added support for context menu in data panels. User can now right-click when over a data panel to show a context-sensitive menu. Macintosh users can also CTRL-click to show the context sensitive menu.



- *Insert Field Specifier*, *Field Options* and *Group* all behave in the same manner as the data panel's pop-out menu.
- *Hide Field*: Hides the field from view
- *New Custom Field*: Creates a new field in the panel. The content of this field can be calculated using a series of new inbuilt functions.

- *Reorder Columns Alphabetically*: Reorders the columns in the panel alphabetically by name,
- *Show Image Search Paths*: This option will open a browser-based report showing the paths EasyCatalog will look to find the image for the selected field.
- *Update All '...' Fields in the Panel* will update only the named field in the panel
- *Update All '...' Fields In The Document* will update only the named field in the document.
- Fields can now be created in EasyCatalog using the 'New Custom Field' option on the right-click menu. The value of a custom field can either be calculated from the contents of other fields or used to provide summary information for groups of records.
- Added tool-tip support to the main data panel. User can now hover over a field to show a tool-tip containing more of the field content. [309]
- The 'Record Viewer' panel will now search the contents of all fields rather than just the key field value. [335]
- InDesign's fitting and alignment options specified through the 'Object→Fitting Options' dialog are now applied when importing images. [341]

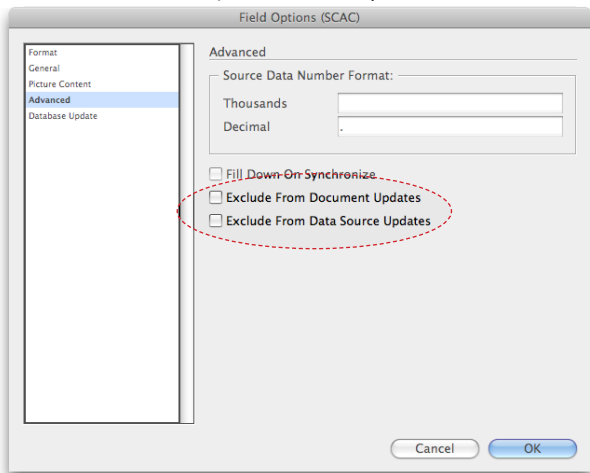
- If picture offset fields have been specified on the *Field Options*→*Picture Content* panel, they will now be updated as part of the ‘*Update Panel*’ operation. [415]
- New keyboard shortcut for ‘*Update Document With Panel Selection*’. This can be specified in InDesign’s keyboard shortcut editor. [367]
- Changes to Field Options:
 - Regular expressions used in cleansing field option now support back references:


```
REGEX: ^^(..) (....)=\1.\2.;
```

 [340]
 - Added support for empty filename extensions when multiple extensions are specified:


```
jpg;eps;;
```

 [443]
 - A new picture alignment option of ‘None’ has been added. [341]
 - Discretionary hyphen has been added to the list of characters that are ignored when ‘*Ignore White Space Changes*’ is selected. [393]
 - Additional option added to *Field Options* → *Advanced* to prevent empty picture fields from being shown as ‘in error’. [434]
 - **Macintosh only:** POSIX paths can now be used to specify the location of images. [464]
 - New ‘*Advanced*’ field options have been added to prevent a field from being updated during the ‘*Update Document*’ and ‘*Update Panel*’ operations.



- ‘*Update Panel*→*With Page Numbers*’ now has a new option: ‘*Collate pages for all grouped records*’. This collects all pages that records appear on for a given group, collates them into a single value and populates the nominated field in the entire group. [363]
- Document report now shows picture paths and link statuses. [373]

- Added support for self-signed HTTPS certificates. Currently, all HTTPS certificates will be accepted as valid, regardless of whether they are self-signed or not. [394]
- Downloading images from a URL:
 - All images can now be cached in a single folder per field. This allows the URL to be changed without rendering all image links on the document invalid. [395]
 - Images can now be downloaded from a HTTPS address [391]
 - **Windows only:** Characters that are legal in a URL but illegal in a Windows filename are now stripped when caching the file locally. [379]
- Added confirmation dialog to the ‘*Remove Field Markers*’ operation. [396]
- A new row type is now available in *Table* → *Row Options*: rows can now be defined as header rows, footer rows or rows that are inserted ‘*once per group*’. The content of group header rows is now ignored when processing the column deletion option, so if the column is empty but the header row contains a value it will be deleted. [466]
- Added new keyboard shortcut ‘*Auto fill tables*’. This new function will inspect an InDesign document table and attempt to populate it with data from the panel.

Quicklinx	Manufacturer	Manufacturer Part Code	Inc VAT Price
2SF8			
2SGB			
2SGC			
2SGD			
2SGF			
2SGH			
2SGJ			
2SGK			
2SGL			
2SGM			
11VY			

In this example, a document table has been pre-filled by the user with stock codes. Although the remaining columns are empty, these could also be populated with data. This data will be updated to the latest values from the panel after performing the ‘*Auto fill tables*’ operations.

Quicklinx	Manufacturer	Manufacturer Part Code	Inc VAT Price
2SF8	Sony	STR-LV500	\$219.72
2SGB	Sony	STR-DE695B	\$219.72
2SGC	Sony	STR-DE695S	\$219.72
2SGD	Sony	STR-DB790B	\$245.57
2SGF	Sony	STR-DB790S	\$245.57
2SGH	Sony	STR-DB2000S	\$381.87
2SGJ	Sony	STR-DA3000ESB	\$652.12
2SGK	Sony	STR-DA3000ESN	\$652.12
2SGL	Sony	STR-DA5000ESB	\$815.44
2SGM	Sony	STR-DA5000ESN	\$815.44
11VY	Sony	STR-LSA1	\$334.87

EasyCatalog uses the table column headers to identify the fields to insert into the table cells. This new function will either update all tables in the document or only the selected table cells.

- The field name column in the Record Viewer panel is now resizable. [459]
- Support has been added to specify proxy server and HTTP authentication details for downloading images from a URL. These settings can be found in the application's general preferences. [456]
- 'Adopt Fields' is now also available on the book panel menu. [442]
- Added 'Update Panel → With Page Positions'. This will update the panel with the X and Y positions of fields in the document. For text fields, the position of the text box containing the field is used. [374]
- The cell finder can now work on a document-wide basis (it no longer requires a document selection). [347]

EasyCatalog XML Data Provider

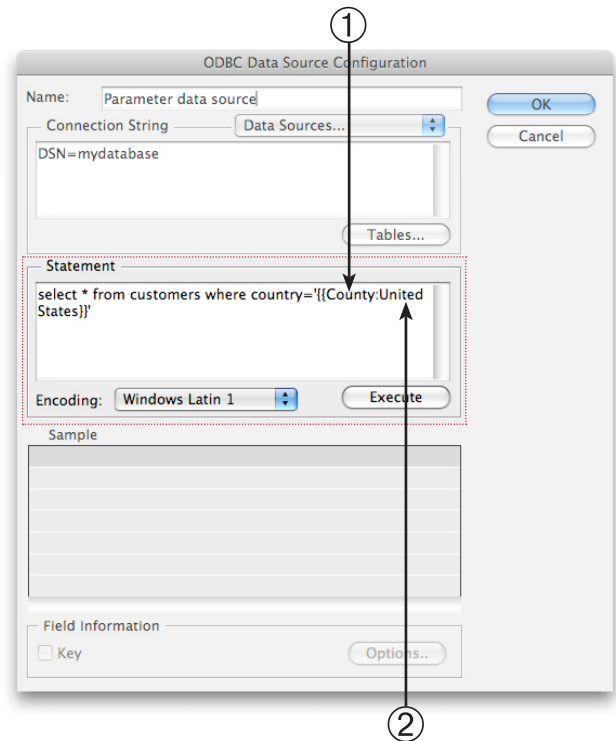
- The first time a field is added to an XML data source, the user now has the option to automatically add all fields shown in the 'Examples' pop-up. [292]

EasyCatalog Pagination Module

- *Guide-based and Flow-based Pagination only:*
New option added to the 'Paginate' dialog to automatically include page, frame, column or odd/even breaks when the contents of a specified field change. [329]
- 'Update Furniture' is now an option on the Book panel pop-out menu. [343]
- RGB values can now be specified by the field used in the 'Apply Swatch Named In' Pagination Rule. The contents of the named field should be in the form:
#RRGGBB
RR, GG and BB should be the hexadecimal value for the red, green and blue values. [356]
- Added new action keyword 'firstingroup'. The {firstingroup GROUPNAME} action can be used to determine if a record is the first within a named group. This behaves the same during both drag and drop and pagination. [354]

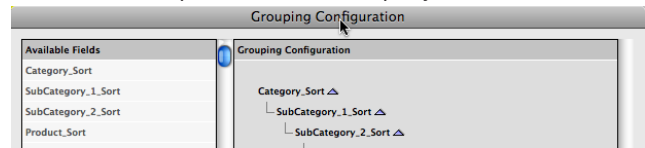
ODBC Data Provider

Added support for user-supplied parameters to the SQL query that is executed to retrieve the data.

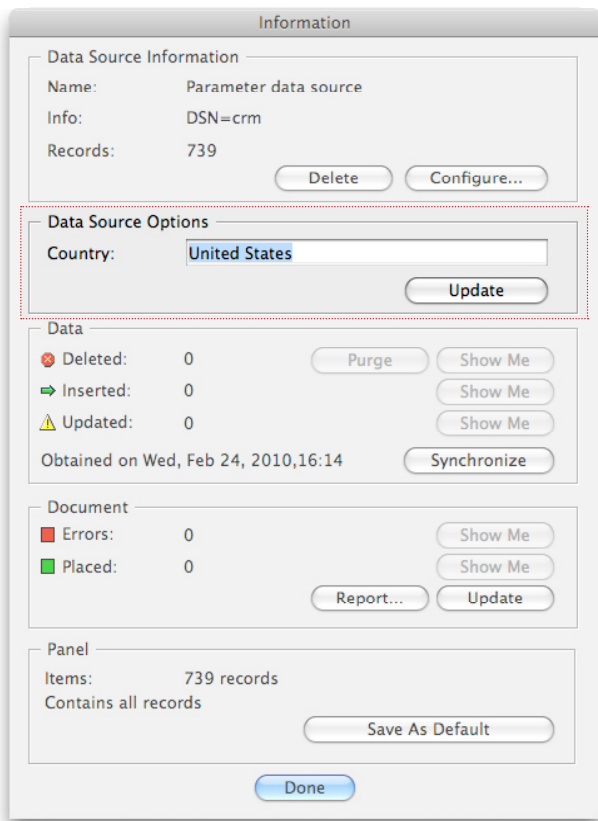


Parameters are included in the SQL statement inside of {{ brackets }}. ① The value inside of the brackets is the name of the parameter presented to the user; ② a default value can also be included.

When the query is executed, the user will be prompted for the value of the parameters in the query:



A maximum of four parameters can be specified in the query.



Parameters can also be changed on the data source 'Information' dialog. Once the parameters have been changed, press the 'Update' button to re-execute the SQL query to retrieve the new data set.

EasyCatalog Scripting Module

- The 'Update Page Numbers' scripting call now has an optional parameter to specify the name of the field to search for. [370]
- New function call added for master-based pagination.

```
myDV.paginateUsingMasters(myDoc, 1, "spreads");
```

Parameter	Description
document	The document to paginate into.
page number	The page number to start paginating at.
spread/ pages	Specifies whether to paginate spreads or pages.
masterfield	(Optional) Specifies the field containing the name of a master page to apply when starting pagination on a new page.
breakField	(Optional) When the contents of the specified field changes, a new page or spread will be started.

- New function call to get the current panel selection: `selectedDataView` will return the data view with the current selection; `selectedRecords` will return a data view containing only the selected records.

```
var myEasyCatalog = app.easycatalogObject;
var myDV = myEasyCatalog.selectedDataView();
var myDVSelected = myDV.selectedRecords();
```

[439]

- Added a new script method on the EasyCatalog object to retrieve details of the selected links. The function `getSelectedLinks` returns an array consisting of sets of: "data source, key field value, field name".

```
var mySelection = myEasyCatalog.
getSelectedLinks();
for (index = 0; index < mySelection.length;
index += 3)
{
    alert(mySelection[index + 0] + "-"
        + mySelection[index + 1] + "-" +
        mySelection[index + 2]);
}
```

[465]

- Updated 'setPginationOption' call to support the new pagination settings: 'FlowBreakOnField', 'FlowBreakOnFieldBreakType', 'GuideBreakOnField', 'GuideBreakOnFieldBreakType'. [410]
- An optional parameter can now be specified on the `updatePageNumbers` script call to control if fields with content are cleared. When this is false, any content in the field will be preserved. Default is true, which is the previous behavior.

```
myDS.updatePageNumbers(myDoc, "all", "Field",
    "", false);
```

[451]

- Added a new function, `applyConfiguration`, to apply a configuration by name.

```
var myEasyCatalog = app.easycatalogObject;
var myDS = myEasyCatalog.datasources.
    item("FMCONS2.CSV");
var myDV = myDS.dataviews.item("FMCONS2.CSV");
myDV.applyConfiguration("Indeling");
```

[449]

- Added a new function, `changeKey`, to change the key fields defined for a data source. This function will not modify document content to reflect the new key configuration.

```
var myEasyCatalog = app.easycatalogObject;
var myDS = myEasyCatalog.datasources.
    item("EASYCATALOG TEST");
myDS.changeKey("ArticleIDName");
```

[448]

- The file parsed by the `exchangeTags` function can now use quoted fields. [437]

Bug Fixes

EasyCatalog

- Field-specified column widths were not being applied to tables that are set to be populated horizontally. [461]
- Fixes a problem where the selection would sometimes jump when the user clicks in a table cell. [467]
- When applying a cell style during table population, if a paragraph style is specified as part of a cell style it will now be applied correctly. If a paragraph style is not specified as part of a Cell Style, any paragraph style applied to the text in the cell will not be overridden. [318, 350, 378]
- Added missing error message for when the field specified by 'prev' or 'next' keyword could not be found. [352]
- When not using a shared workspace folder, the 'Fields.xml' and 'Datasource.xml' configuration files will always be written to the workspace folder when changes have been made. [358]
- If a record cannot be found during the field adoption process, the following characters are stripped from the beginning and end of the key field value and adoption is attempted again: Carriage Return, Line Feed, Tab. [365]
- 'Search for Content' no longer removes images that have been imported for a field. 'Search for Content' now only removes and re-imports images that were imported during a previous 'Search for Content' operation. [366]
- Fixes problem where 'Fit Box to Content' operations would not work when an anchored item was aligned to the bottom of the box. [368]
- Cell merging now works with horizontally populated tables. [371]
- Fixes unknown exception which occurred when attempting to merge cells in a horizontally populated table where columns had been deleted due to column collapsing. [372]
- Table cell merging now works when anchored images are placed in the table cells. The path to the anchored image is used to determine whether cells are equivalent. [375]
- When populating tables, 'Copy and Repeat' now only copies the contents of the selected cells. To copy the entire row (as before), select all cells in the row prior to 'Copy and Repeat'. [381]
- Column collapsing now ignores EasyCatalog group header rows. [382]
- Fixes cosmetic issues in the localized versions. [384]
- 'Fit Column to Content' now also fits the table headers. [386]
- Fixes 'unhandled exception in ECProductStyle at line 1042'. This was caused by not having the Pagination module installed. [389]
- Fixes problem when running multiple versions of EasyCatalog on the same machine and not logged on as administrator. The serial numbers for one version would previously be read by the other and marked as 'invalid.' [400]
- If a field is overset within a table cell, EasyCatalog assumes that it is positioned at the anchor point of the table. If the table has split across pages, this anchor point could be on a previous page. [401]
- Tables contained within field content are no longer populated. This affected users who were using the 'imported text' feature to import text containing a table. [398]
- When inserting a bulleted/numbered list using the tag, an 'indent to here' character is now inserted after the tab to ensure the paragraph is correctly indented if it splits across lines. [430]
- Fixes a problem when loading a panel configuration that would sometimes prevent it from being applied immediately. This was a problem where a non-grouped configuration was loaded into an already-grouped panel. [429]

EasyCatalog Pagination Module

- Fixes crash in Master-based pagination when a group and a box within the group both have position indexes. [447]
- Minor performance enhancements. [348]
- 'Strip Whitespace' and 'Remove Blank Lines for Empty Fields' operations are now performed after processing anchored items. This will prevent blank lines or whitespace remaining in the document if an anchored object deletes itself. [423]
- Fixes a problem where the progress bar did not always appear when paginating a small number of library items with a lot of records. [351]
- When dragging a single record from an ungrouped panel to a box that uses the 'next' or 'prev' keywords in a Pagination Rules action, an error would be reported ("an error occurred whilst evaluating a pagination rule action"). [351]
- Fixed problems with automatic page insertion:
 - When the master page consists of multiple single column text boxes linked together (instead of one multi-column box) pagination would stop with a 'the amount of overmatter was not reduced' error. [360]
 - If the first page in the document is even, automatic page insertion will sometimes stop when the user is using an 'odd' or 'even' break. This was caused by EasyCatalog using the page index number to determine if an odd or even page had just been inserted. [361]
 - When not paginating at the end of a document, automatic page insertion would previously fail. [392]

- Fixed 'Unhandled Exception in GuideBasedPagination.cpp at line 360'. This was caused by attempting to paginate onto a master page. [355]
- Paginate 'Group Data' is now supported for non-relational data sources. This can be used in conjunction with the 'Position Index' attribute to specify which record of a particular group to use. [376]
- During guide-based pagination, items set to 'Continuation' are now paginated correctly. [377]
- Error message given by guide-based pagination was showing the page index number in the document, not the section page number [402]
- When merging using the 'Restrict Vertical Cell Merging to Page Bounds' option, cells are merged progressively smaller from left to right. [404]
- Added error message when setting the minimum column width to zero on the 'Column Options' dialog [405]

- Fixes a bug where boxes would be deleted if a position index referred to a group, not a record [407]
- Fixes a problem where group header rows could lose their content if the first column is deleted as a result of column collapsing. [411]
- Fixes cosmetic issues in the German-localized version on the Pagination dialog. [345]

EasyCatalog Scripting Module

- The function call 'setPaginationOption' now works with boolean values correctly. [346]

EasyCatalog Relational Module

- Fixed problem when using Left/Right joins. If one of the tables in a left or right join does not return a match, the data from a previous record may sometimes be used instead. [357]

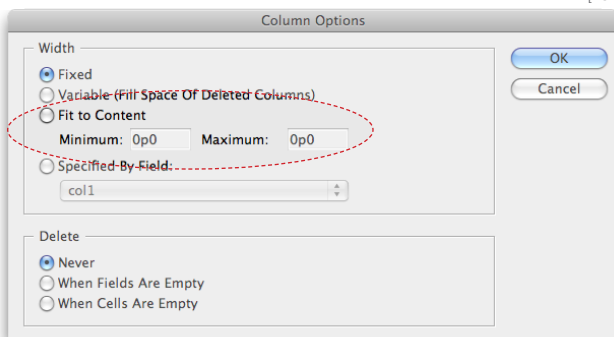
Version 3.0.11 / 4.0.3

September 14, 2009

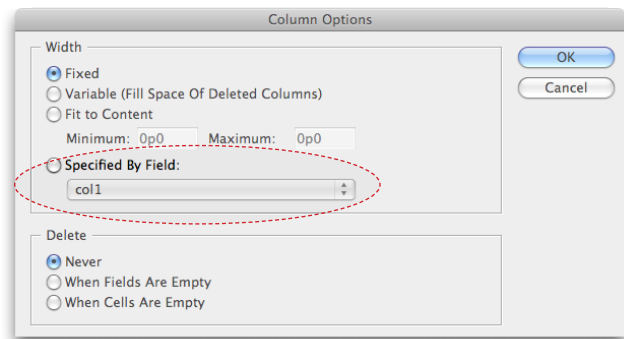
Enhancements

EasyCatalog

- EasyCatalog documentation and resources can now be found on the Help menu. [175]
- Added an 'Is Not' operator to the Subset dialog. [278]
- Added 'Is Empty' and 'Is Not Empty' operators to the Subset dialog. [325]
- 'UPPER' and 'LOWER' are now keywords which can be used in options such as field suffix, prefix, picture path, etc. [283]
- A new column option is available to resize the column based on the amount of content in the column. [291]



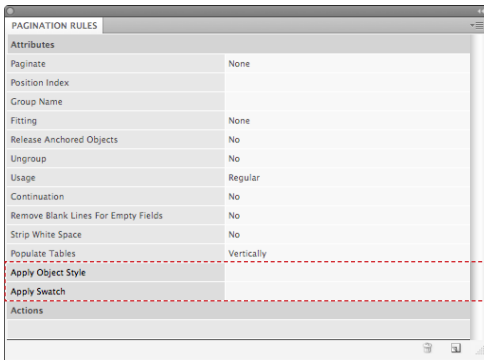
- The width of a table column can now be set based on the contents of a field in the data. [316]



- Added support for the 'color' attribute on the HTML 'font' tag. The colour specified should be the name of a swatch defined in the document. [317]
- Deletion of column/row 'when fields are empty' checks the contents of text boxes anchored within the cells. [321]
- A 'DOESNOTCONTAIN' operator has been added to Conditional Processing. [304]
- A cancel button has been added to the dialog that appears warning of the closure of the last panel for a data source. [302]

EasyCatalog Pagination Module

- Added new pagination rule - 'Apply Swatch From Field' - that will apply a colour swatch to the box based on the contents of one of the fields. [323]
- Added new pagination rule - 'Apply Object Style From Field' - that will apply an object style to the box based on the contents of one of the fields. [248]



- Added new Pagination Action operands “Is Empty” and “Is Not Empty”. [326]
- Library items can now be named “*”. When using the ‘Asset Name’ Pagination option, this wildcard library item will be used when a library item with the correct name can not be found. [307]

EasyCatalog Scripting Module

- Scripting operations should now be significantly quicker, especially when dealing with multiple data sources or configurations where there are a number of available data sources. [306]

Bug Fixes

EasyCatalog

- Fixes crash when attempting to import a text file into a graphic frame. [74]
- During table population, EasyCatalog will no longer attempt to apply a cell style if the field is empty. [214]
- Table columns are now deleted before the application of cell styles. [215]
- ‘Convert to Field Specifiers’ is now highlighted when text-on-a-path is selected in the document. [244]
- The formatting tag <P> no longer affects paragraph alignment (unless specified by the tag itself). [285]
- Fixes bug where a new ‘Fields.xml’ configuration file would not be written after a ‘Synchronize with Data Source’ that resulted in the number of fields changes. This would result in the source data being reloaded each time the data source was subsequently opened. [285]
- **Macintosh only:** Fixes problem where image names or paths containing accented characters would always be reported as ‘in error’. [294]
- Fixes problem where images would always be shown as ‘in error’ when placed in non-graphic frames (i.e. if the content type was not set to ‘Graphic’). [299]
- Dragging records to frames that already contain a graphic should now be easier. Previously the user would need to drag to white space around the image. [300]

- Hyperlinks could previously be applied when the field type was not set to ‘Hyperlink’. This would occur if the field had previously been configured as a ‘Hyperlink’. [301]
- Importing field options via the ‘Field Options→Import’ no longer modifies the key field configuration of the data source being imported into. [313]
- The picture scale import options now work correctly on all spreads of the document. [315]
- The application of a cell style no longer overrides any paragraph styles applied to the text within the cell. [318]
- The ‘fit to content’ table column options should now be stored and retrieved correctly. [319]
- InDesign no longer hangs when attempting to resize an empty multi-column text box. [320]
- An error will now be reported if the group name entered into a ‘Group Name’ attribute is invalid. [303]
- Guide-based and Position-based pagination now work correctly when a Product Style deletes itself as the result of an action [308]
- Fixes a potential crash when evaluating Pagination Rules actions. [310]
- Update Panel →With Page Numbers now updates records where fields are included in hidden conditional text. [334]

EasyCatalog Pagination Module

- Fixes problem where ‘Last on Spread’ furniture option would not always work with Relational data sources. [287]
- Update Furniture no longer displays an error when there is no field on the page (or a previous page) in the document. If there is a furniture box on page 1, but the first field is on a later page, the furniture box will now be populated with data for the first field in the document. [137]
- Fixes a problem where pagination would stop if the master frame being paginated into contains text. [184]
- Fixes problem where Position Index would always delete boxes when dragging a single group to the document or populating a Product Style with a single group. [328]

EasyCatalog Scripting Module

- Fixes scripting issue where child data sources of Relational data sources could not be accessed. [282]

EasyCatalog Relational Module

- Fixes memory leak when paginating a Relational data source. [298]

About 65bit Software

65bit Software Limited was founded in 2003 and specializes in the development of high quality Plug-ins for Adobe InDesign and InCopy.

We believe that the growing processing power of today's desktop computers is allowing the development of a new breed of tools, offering levels of integration, power and ease of use previously only seen in high end publishing systems.

At 65bit we are committed to providing best of breed solutions for the database publishing, catalog, newspaper and magazine markets.

In addition to developing InDesign Plug-ins, we offer custom development services and can help you to design and implement an InDesign or InCopy-based solution. You can learn more about our services or submit a request for more information by sending an email to sales@65bit.com

DAM/System Vendors - Any of our products can be included and branded as part of your solution. Please contact sales@65bit.com for more information.

Contact Details

Postal: Meriden House
6 Great Cornbow
Halesowen
West Midlands
B63 3AB

Web: <http://www.65bit.com>

Sales: sales@65bit.com

Support: support@65bit.com
<http://www.65bit.com/support>

Twitter: <http://www.twitter.com/65bitsoftware>

Feedback: We welcome all feedback and bug reports on 65bit products. Please email any comments to: support@65bit.com